

CONFIDENTIAL DOCUMENT
FOR PRIVILEGED PHANA MEMBERS ONLY



PHANA
KARNATAKA

**PHANA ADVISORY
RATES**

2024-25

CELEBRATING 2 DECADES OF SOLIDARITY

Private Hospitals & Nursing Homes Association-Karnataka

1st floor, Vidhya Bhavana, 16/6, Miller Tank Bund Road, Vasanthnagar, Bengaluru- 560052
www.phana.org pro@phana.org

Dear PHANA Members,

Warm Season's Greetings,

*The bitterness of poor quality is remembered long after
the sweetness of low price has faded from memory.*

Aldo Gucci

We are delighted to announce that our Panel of Costing and Insurance Negotiation Subcommittee has completed a meticulous Costing analysis for operating Private Hospital Beds in Small (<25 beds), Medium (25 to 100 beds), and Large (100+ beds) Hospitals in Bangalore and Mysore. Hospitals with an investment of less than 75 lakhs per bed were included in the study. *(Note: Hospitals with investment per bed of more than 75 lakhs and who have worked out their own costing based tariff can continue their own tariffs.)*

PHANA, as a dedicated association, remains steadfast in its commitment to enhance the quality of healthcare in private hospitals for all patients. This commitment is underscored by a careful consideration of the cost of care and the **establishment of appropriate tariffs** within our hospitals and Nursing homes.

The concerns raised by our members regarding unjust tariff negotiations conducted by insurance companies, which compel our member hospitals to agree to unreasonable tariffs, are disrupting fair tariff practices.

Having a scientifically arrived tariff is the need of the hour.

Our objective is to support all member hospitals in achieving sustainability, profitability, and elevated standards of care for patients and employees alike.

Despite the annual escalation of input costs, many member hospitals have felt compelled to lower tariffs to maintain competitiveness, often unable or hesitant to adjust tariffs to keep pace with inflationary pressures. Consequently, this scenario has led to financial strain and potential cash flow issues, jeopardizing resource availability and posing risks to the quality of patient care.

Our survey has illuminated a concerning trend among small to medium-sized hospitals, many of which have neglected proper costing analysis when determining tariffs. Instead, they opt to undercut competitors, sparking an unhealthy and ultimately unprofitable price war.

This situation is exacerbated by insurance companies, which capitalize on the lowest tariffs available, often imposing unsustainable rates on member hospitals. To mitigate losses, hospital owners resort to operational efficiency measures, sometimes compromising patient care standards and healthcare workers' welfare, leading to talent drain and high attrition rates.

It's noteworthy that the discussions initiated in the PHANA South WAP group, driven by Dr. Ramesh Makam's initiative in April 2023, culminated in a comprehensive Costing exercise conducted at the PHANA office **over seven months**,

involving over 100 hospital owners from various scales and spending over 2500 man-hours collectively.

Through meticulous data collection and analysis, we arrived at the total cost of operating hospitals of different sizes, as well as the Cost per Bed per Day (**CPBPD**) across various capacity utilization scenarios. This exercise enabled us to establish a Minimum **Rate per Bed per Day (RPBPD)** to ensure viability without compromising care standards or employee welfare.

This advisory, formulated in December 2023, underwent opinion collection, scrutiny and corrections by the EC before rolling out for implementation. This has the approval of AGM dated 2nd February 2024.

We emphasize that this advisory targets member hospitals who haven't conducted their own costing or those with investments less than INR 75 lakhs per bed, aiming to assist in setting minimum viable pricing and standard billing formulas to safeguard sustainability and growth.

However, we strongly advise all members **to set tariffs equal to or above the recommended rates to maintain industry standards**. In cases of economically weaker patients, known individuals, or staff, we suggest billing at the tariff rate itself clearly showing the discounted amount in the bill. This practice will bring in transparency in tariff and will document your philanthropy.

We urge all members to increase rates annually, at least in line with the inflation rate, first day financial year, 1st of April, to facilitate annual salary increments for healthcare workers, promoting retention and Morale.

Yours faithfully,

Sd/-
Dr Govindaiah Yatheesh
Hon President

Sd/-
Dr M L Giridhar
Hon Secretary

PHANA RECOMMENDED RATES

This tariff is scientifically derived and all member hospitals are advised to implement these tariffs in the best interest of Quality Patient Care.

SL NO	Speciality	Procedure	ALOS (Anticipated Length Of Stay)	General Ward	Semi Private	Private	Deluxe	Suite
1	ENT	Tonsillectomy Including Coblation Wand And Laser	2	₹ 1,03,395	₹ 1,18,244	₹ 1,27,160	₹ 1,44,992	₹ 1,53,908
2	ENT	Adenoidectomy -Including Coblation Wand And Laser	2	₹ 1,03,395	₹ 1,18,244	₹ 1,27,160	₹ 1,44,992	₹ 1,53,908
3	ENT	Tympanoplasty All Types Of Tympanoplasty Including Caneloplasty	3	₹ 1,28,426	₹ 1,50,949	₹ 1,64,573	₹ 1,91,821	₹ 2,05,445
4	ENT	Tonsillectomy	3	₹ 70,395	₹ 85,244	₹ 94,160	₹ 1,11,992	₹ 1,20,908
5	ENT	Tonsillectomy And Adenoidectomy	2	₹ 78,329	₹ 93,877	₹ 1,03,493	₹ 1,22,725	₹ 1,32,341
6	ENT	Mastoidectomy & Tympanoplasty Including meatoplasty	3	₹ 1,24,093	₹ 1,47,116	₹ 1,61,240	₹ 1,89,488	₹ 2,03,612
7	ENT	Fess With Septoplasty & Turbinectomy Or Polypectomy/ Conchoplasty- Unilateral	3	₹ 1,34,093	₹ 1,57,116	₹ 1,71,240	₹ 1,99,488	₹ 2,13,612
8	ENT	Full House Fess + Septoplasty With Turbinectomy Or Polypectomy/ Conchoplasty - Bilateral	3	₹ 1,44,759	₹ 1,68,283	₹ 1,82,907	₹ 2,12,155	₹ 2,26,779
9	ENT	Fess With Septoplasty & Turbinectomy Or Polypectomy Or Conchoplasty- Bilateral	3	₹ 1,39,759	₹ 1,63,283	₹ 1,77,907	₹ 2,07,155	₹ 2,21,779
10	General Surgery	Haemorrhoidectomy + Fissurectomy (Stapler / Tackers Included)	2	₹ 93,895	₹ 1,09,494	₹ 1,19,160	₹ 1,38,492	₹ 1,48,158

11	General Surgery	Haemorrhoidectomy (Without Fissurectomy) (Stapler / Tackers Included)	2	₹ 80,395	₹ 95,244	₹ 1,04,160	₹ 1,21,992	₹ 1,30,908
12	General Surgery	Fistulectomy Low Including Cost Of Laser	2	₹ 78,395	₹ 93,244	₹ 1,02,160	₹ 1,19,992	₹ 1,28,908
13	General Surgery	Fistulectomy High Including Cost Of Laser	2	₹ 84,062	₹ 99,411	₹ 1,08,827	₹ 1,27,659	₹ 1,37,075
14	General Surgery	Fistulectomy With Sphincterectomy	1	₹ 51,698	₹ 59,872	₹ 65,080	₹ 75,496	₹ 80,704
15	General Surgery	Appendectomy -Lap	3	₹ 80,395	₹ 95,244	₹ 1,04,160	₹ 1,21,992	₹ 1,30,908
16	General Surgery	Appendectomy -Open	3	₹ 65,350	₹ 78,420	₹ 86,262	₹ 94,888	₹ 1,04,377
17	General Surgery	Cholecystectomy (Lap)	2	₹ 84,062	₹ 99,411	₹ 1,08,827	₹ 1,27,659	₹ 1,37,075
18	General Surgery	Herniorrhaphy- Inguinal	2	₹ 53,395	₹ 66,744	₹ 74,160	₹ 88,992	₹ 96,408
19	General Surgery	Hernioplasty Inguinal/ Femoral Unilateral Including Mesh	2	₹ 68,395	₹ 81,744	₹ 89,160	₹ 1,03,992	₹ 1,11,408
20	General Surgery	Hernioplasty Inguinal/ Femoral/ Bilateral Including Mesh	2	₹ 1,02,593	₹ 1,22,616	₹ 1,33,740	₹ 1,55,988	₹ 1,67,112
21	General Surgery	Hernioplasty Umbilical/ Paraumbilical - Including Mesh Cost	3	₹ 95,093	₹ 1,15,116	₹ 1,26,240	₹ 1,48,488	₹ 1,59,612
22	General Surgery	Hernioplasty Incisional /Ventral - Including Mesh Cost	4	₹ 1,31,790	₹ 1,58,488	₹ 1,73,320	₹ 2,02,984	₹ 2,17,816
23	General Surgery	Laparoscopic Hernioplasty Inguinal Including Mesh- Unilateral	2	₹ 1,07,395	₹ 1,23,744	₹ 1,34,160	₹ 1,54,992	₹ 1,65,408
24	General Surgery	Laparoscopic Hernioplasty Inguinal Including Mesh- Bilateral	2	₹ 1,61,093	₹ 1,85,616	₹ 2,01,240	₹ 2,32,488	₹ 2,48,112
25	General Surgery	Laparoscopic Hernioplasty Umbilical Para Umbilical Excluding Laparoscopic	2	₹ 1,52,395	₹ 1,68,744	₹ 1,79,160	₹ 1,99,992	₹ 2,10,408
26	General Surgery	Hernioplasty / Incisional/ Ventral Mess And Tackers	3	₹ 1,90,426	₹ 2,14,449	₹ 2,29,573	₹ 2,59,821	₹ 2,74,945
27	General Surgery	Open Right Or Left Hemicolectomy	5	₹ 2,45,155	₹ 2,83,527	₹ 3,07,067	₹ 3,54,147	₹ 3,77,687
28	General Surgery	Lap Right Or Left Hemicolectomy	5	₹ 2,60,821	₹ 2,99,693	₹ 3,23,733	₹ 3,71,813	₹ 3,95,853
29	General Surgery	Perianal Abscess I& D	2	₹ 53,395	₹ 66,744	₹ 74,160	₹ 88,992	₹ 96,408

30	General Surgery	Lymph Node Biopsy / Cervical/Axillary / Inguinal	2	₹ 53,395	₹ 66,744	₹ 74,160	₹ 88,992	₹ 96,408
31	General Surgery	Lipoma Under Ga	1	₹ 43,698	₹ 51,872	₹ 57,080	₹ 67,496	₹ 72,704
32	General Surgery	Pilonidal Sinus With Flap Cover	3	₹ 1,08,426	₹ 1,30,949	₹ 1,44,573	₹ 1,71,821	₹ 1,85,445
33	General Surgery	Pilonidal Sinus Without Flap Cover	3	₹ 80,093	₹ 1,00,116	₹ 1,11,240	₹ 1,33,488	₹ 1,44,612
34	General Surgery	Modified Radical Mastectomy	4	₹ 1,64,124	₹ 1,94,821	₹ 2,13,653	₹ 2,51,317	₹ 2,70,149
35	General Surgery	Simple Mastectomy	2	₹ 93,729	₹ 1,09,577	₹ 1,19,493	₹ 1,39,325	₹ 1,49,241
36	General Surgery	Breast Lumpectomy	1	₹ 49,364	₹ 58,039	₹ 63,747	₹ 75,163	₹ 80,871
37	General Surgery	Thyroidectomy	3	₹ 1,37,426	₹ 1,61,449	₹ 1,76,573	₹ 2,06,821	₹ 2,21,945
38	General Surgery	Circumcision (Daycare)	1	₹ 36,698	₹ 43,372	₹ 47,080	₹ 54,496	₹ 58,204
39	General Surgery	Surgery For Varicose Veins Saphenofemoral (Sfj) Flush Ligation And Stripping	2	₹ 1,02,395	₹ 1,18,744	₹ 1,29,160	₹ 1,49,992	₹ 1,60,408
40	General Surgery	Varicose Veins - EVLA	2	₹ 1,18,729	₹ 1,36,077	₹ 14,793	₹ 1,70,325	₹ 1,81,741
41	General Surgery	Wound Debridement Minor	1	₹ 37,364	₹ 44,539	₹ 48,747	₹ 57,163	₹ 61,371
42	General Surgery	Wound Debridement Medium		₹ 50,000	₹ 60,000	₹ 72,000	₹ 86,400	₹ 1,03,680
43	General Surgery	Wound Debridement Major	2	₹ 74,729	₹ 89,077	₹ 97,493	₹ 1,14,325	₹ 1,22,741
44	OBG	Abdominal Hysterectomy With BSO	3	₹ 95,093	₹ 1,15,116	₹ 1,26,240	₹ 1,48,488	₹ 1,59,612
45	OBG	Lap Hysterectomy	3	₹ 1,17,759	₹ 1,39,783	₹ 1,52,907	₹ 1,79,155	₹ 1,92,279
46	OBG	Hysterectomy Vaginal	3	₹ 1,12,093	₹ 1,33,616	₹ 1,46,240	₹ 1,71,488	₹ 1,84,112
47	OBG	Hysterectomy LAVH	3	₹ 1,17,759	₹ 1,39,783	₹ 1,52,907	₹ 1,79,155	₹ 1,92,279
48	OBG	Hysterectomy Vaginal With Pelvic Floor Repair	3	₹ 1,23,426	₹ 1,45,949	₹ 1,59,573	₹ 1,86,821	₹ 2,00,445
49	OBG	Hysterectomy LAVH With Pelvic Floor Repair	3	₹ 1,29,093	₹ 1,52,116	₹ 1,66,240	₹ 1,94,488	₹ 2,08,612
50	OBG	D & C	1	₹ 35,098	₹ 42,072	₹ 46,080	₹ 54,096	₹ 58,104
51	OBG	D &C Hystrectomy (Daycare)	2	₹ 69,829	₹ 83,877	₹ 91,993	₹ 1,08,225	₹ 1,16,341
52	OBG	Open Ruptured Ectopic Pregnancy	3	₹ 80,093	₹ 1,00,116	₹ 1,11,240	₹ 1,33,488	₹ 1,44,612
53	OBG	Laparoscopic Ruptured Ectopic Pregnancy	2	₹ 91,426	₹ 1,12,449	₹ 1,24,573	₹ 1,48,821	₹ 1,60,945
54	OBG	Open Wertheims With Node Dissection	5	₹ 1,66,155	₹ 2,01,527	₹ 2,22,067	₹ 2,63,147	₹ 2,83,687

55	OBG	Laparoscopic Wertheims With Node Dissection	5	₹ 2,11,488	₹ 2,50,860	₹ 2,75,400	₹ 3,24,480	₹ 3,49,020
56	OBG	Open Myomectomy	3	₹ 80,093	₹ 1,00,116	₹ 1,11,240	₹ 1,33,488	₹ 1,44,612
57	OBG	Ovarian Cystectomy Open	2	₹ 80,093	₹ 1,00,116	₹ 1,11,240	₹ 1,33,488	₹ 1,44,612
58	OBG	Ovarian Cystectomy Laparoscopic	3	₹ 91,426	₹ 1,12,449	₹ 1,24,573	₹ 1,48,821	₹ 1,60,945
59	OBG	Normal Delivery With Well Baby Care Singles /Twins	2	₹ 53,395	₹ 66,744	₹ 74,160	₹ 88,992	₹ 96,408
60	OBG	Lscs With Well Baby Single /Twins	3	₹ 90,093	₹ 1,10,116	₹ 1,21,240	₹ 1,43,488	₹ 1,54,612
61	Orthopaedics	Acl Reconstuction Excluding Cost Of Implants	3	₹ 1,18,426	₹ 1,40,949	₹ 1,54,573	₹ 1,81,821	₹ 1,95,445
62	Orthopaedics	Pcl Reconstruction Excluding Cost Of Implants	3	₹ 1,29,759	₹ 1,53,283	₹ 1,67,907	₹ 1,97,155	₹ 2,11,779
63	Orthopaedics	Acl & Pcl Reconstruction Excluding Cost Of Implants	4	₹ 1,67,790	₹ 1,98,988	₹ 2,18,320	₹ 2,56,984	₹ 2,76,316
64	Orthopaedics	Acl & Pcl And Mcl Reconstruction Excluding Cost Of Implants	4	₹ 1,89,124	₹ 2,21,321	₹ 2,41,653	₹ 2,82,317	₹ 3,02,649
65	Orthopaedics	Menisectomy	2	₹ 80,395	₹ 95,244	₹ 1,04,160	₹ 1,21,992	₹ 1,30,908
66	Orthopaedics	Meniscus Repair	2	₹ 1,02,395	₹ 1,18,744	₹ 1,29,160	₹ 1,49,992	₹ 1,60,408
67	Orthopaedics	Closed Reduction Dislocation Minor	1	₹ 26,698	₹ 33,372	₹ 37,080	₹ 44,496	₹ 48,204
68	Orthopaedics	Closed Reduction Dislocation Major	1	₹ 38,301	₹ 45,705	₹ 50,413	₹ 59,829	₹ 64,537
69	Orthopaedics	Carpal Tunnel Release U/L Open	1	₹ 38,301	₹ 45,705	₹ 50,413	₹ 59,829	₹ 64,537
70	Orthopaedics	Carpal Tunnel Release U/L Microscopic	1	₹ 54,698	₹ 62,872	₹ 68,080	₹ 78,496	₹ 83,704
71	Orthopaedics	Implant Removal Minor Except K-Wire	2	₹ 64,729	₹ 79,077	₹ 87,493	₹ 1,04,325	₹ 1,12,741
72	Orthopaedics	Implant Removal Major	2	₹ 87,395	₹ 1,03,744	₹ 1,14,160	₹ 1,34,992	₹ 1,45,408
73	Orthopaedics	Intrarticular Fracture Fixation Excluding						
74	Orthopaedics	Orif B Of Fracture K-Wire Including Cost Of Implant	2	₹ 83,395	₹ 98,244	₹ 1,07,160	₹ 1,24,992	₹ 1,33,908
75	Orthopaedics	Orif Of Fracture Piting Excluding Cost Of	3	₹ 1,12,093	₹ 1,33,616	₹ 1,46,240	₹ 1,71,488	₹ 1,84,112
76	Orthopaedics	Periarticular Intrarticular Fracture Fixation Excluding	4	₹ 1,72,124	₹ 2,02,821	₹ 2,21,653	₹ 2,59,317	₹ 2,78,149

77	Orthopaedics	Orif Ankle /Talus/ Calcaeneum -Excludng Cost Implant	3	₹ 1,29,093	₹ 1,52,116	₹ 1,66,240	₹ 1,94,488	₹ 2,08,612
78	Orthopaedics	Frcature Of Acetabulum Excluding Cost Of	3	₹ 2,09,488	₹ 2,47,360	₹ 2,70,400	₹ 3,16,480	₹ 3,39,520
79	Orthopaedics	Im Nailing Interlocking Excluding Cost Of Implant	3	₹ 1,29,093	₹ 1,52,116	₹ 1,66,240	₹ 1,94,488	₹ 2,08,612
80	Orthopaedics	Im Nailing Femur Interlocking Excluding Cost Of	3	₹ 1,55,790	₹ 1,85,488	₹ 2,03,320	₹ 2,38,984	₹ 2,56,816
81	Orthopaedics	Fracture Neck Femur Interlocking Excluding Cost Of	5	₹ 1,82,488	₹ 2,18,860	₹ 2,40,400	₹ 2,83,480	₹ 3,05,020
82	Orthopaedics	Laminectomy Discectomy	3	₹ 1,39,759	₹ 1,63,283	₹ 1,77,907	₹ 2,07,155	₹ 2,21,779
83	Orthopaedics	Microdiscectomy	2	₹ 1,45,062	₹ 1,63,411	₹ 1,75,827	₹ 2,00,659	₹ 2,13,075
84	Orthopaedics	Spinal Fusion Cervical /Lumbar Thoracic Where	4	₹ 1,98,457	₹ 2,30,155	₹ 2,49,987	₹ 2,89,651	₹ 3,09,483
85	Orthopaedics	Spinal Fusion Cervical Lumbar / Thoracic Where	4	₹ 1,98,457	₹ 2,30,155	₹ 2,49,987	₹ 2,89,651	₹ 3,09,483
86	Orthopaedics	Closed Reduction Of Major Joints Under Ga /Sa	2	₹ 69,729	₹ 84,077	₹ 92,493	₹ 1,09,325	₹ 1,17,741
87	Orthopaedics	Bipolar Hemiarthroplasty / Dynamichip Screws (Dhs)	4	₹ 1,66,457	₹ 1,96,655	₹ 2,14,987	₹ 2,51,651	₹ 2,69,983
88	Orthopaedics	Total Knee Replcement Unilateral Excluding Cost Of implants	5	₹ 2,10,155	₹ 2,48,527	₹ 2,72,067	₹ 3,19,147	₹ 3,42,687
89	Orthopaedics	Total Knee Replacement Bilateral Excluding Cost Of implants	7	₹ 3,35,217	₹ 3,91,937	₹ 4,27,893	₹ 4,99,805	₹ 5,35,761
90	Orthopaedics	Total Hip Replacement Unilateral Excluding Cost Of implant	5	₹ 2,10,155	₹ 2,48,527	₹ 2,72,067	₹ 3,19,147	₹ 3,42,687
91	Orthopaedics	Total Hip Replacement Bilateral Excluding Cost Of implants	7	₹ 3,35,217	₹ 3,91,937	₹ 4,27,893	₹ 4,99,805	₹ 5,35,761
92	Urology	Av Fistula Dialysis (Daycare)	1	₹ 31,698	₹ 38,372	₹ 42,080	₹ 49,496	₹ 53,204
93	Urology	Trup	3	₹ 1,02,093	₹ 1,23,616	₹ 1,36,240	₹ 1,61,488	₹ 1,74,112
94	Urology	Holep Inculding Cost Of Laser	4	₹ 1,53,790	₹ 1,81,988	₹ 1,98,320	₹ 2,30,984	₹ 2,47,316
95	Urology	Hydrocelectomectomy Unilateral	1	₹ 53,698	₹ 61,872	₹ 67,080	₹ 77,496	₹ 82,704

96	Urology	Hydrocelectomectom y Bilateral	1	₹ 80,547	₹ 92,808	₹ 1,00,620	₹ 1,16,244	₹ 1,24,056
97	Urology	Varicocelectomy	1	₹ 53,698	₹ 61,872	₹ 67,080	₹ 77,496	₹ 82,704
98	Urology	Varicocelectomy Bilateral	1	₹ 80,547	₹ 92,808	₹ 1,00,620	₹ 1,16,244	₹ 1,24,056
99	Urology	Simple Pcnl +Stenting	3	₹ 1,28,426	₹ 1,50,949	₹ 1,64,573	₹ 1,91,821	₹ 2,05,445
100	Urology	Simple Pcnl Bilateral +Stenting	4	₹ 1,78,724	₹ 2,09,121	₹ 2,27,653	₹ 2,64,717	₹ 2,83,249
101	Urology	Mini -Perc +Stenting	4	₹ 1,77,124	₹ 2,07,821	₹ 2,26,653	₹ 2,64,317	₹ 2,83,149
102	Urology	Staghorn Pcnl +Stenting	4	₹ 2,09,790	₹ 2,42,488	₹ 2,63,320	₹ 3,04,984	₹ 3,25,816
103	Urology	Staghorn Pcnl Bilateral +Stenting	2	₹ 1,23,729	₹ 1,41,077	₹ 1,52,493	₹ 1,75,325	₹ 1,86,741
104	Urology	Rirs Uni	2	₹ 1,50,729	₹ 1,68,077	₹ 1,79,493	₹ 2,02,325	₹ 2,13,741
105	Urology	Rirs Bilateral	2	₹ 2,25,395	₹ 2,44,744	₹ 2,58,160	₹ 2,84,992	₹ 2,98,408
106	Urology	Urs Lithotripsy Unilateral -Including Cost Of Dj Stenting	2	₹ 80,395	₹ 95,244	₹ 1,04,160	₹ 1,21,992	₹ 1,30,908
107	Urology	Urs Lithotripsy Bilateral- Inculding With Cost Of Dj Stenting	2	₹ 1,01,729	₹ 1,17,577	₹ 1,27,493	₹ 1,47,325	₹ 1,57,241
108	Urology	Urs Lithotripsy including Cost Of Unilateral Dj Stenting And Laser	2	₹ 1,01,062	₹ 1,16,411	₹ 1,25,827	₹ 1,44,659	₹ 1,54,075
109	Urology	Urs Lithotripsy including Cost Of Bilateral Dj Stenting And Laser	2	₹ 1,27,395	₹ 1,43,744	₹ 1,54,160	₹ 1,74,992	₹ 1,85,408
110	Urology	Lithotripsy Eswl +Stenting	1	₹ 66,698	₹ 73,372	₹ 77,080	₹ 84,496	₹ 88,204
111	Urology	Lithotripsy Eswl	1	₹ 56,698	₹ 63,372	₹ 67,080	₹ 74,496	₹ 78,204
112	Urology	Cystoscopy And Dj Sstenting Insertion (Daycare)	1	₹ 44,898	₹ 52,472	₹ 57,080	₹ 66,296	₹ 70,904
113	Urology	Cystoscopy And Dj Stenting Removal (Daycare)	1	₹ 26,698	₹ 33,372	₹ 37,080	₹ 44,496	₹ 48,204
114	Urology	Cystoscopy Urs & Dj Stenting Inculding Cost Of Stent	2	₹ 1,01,062	₹ 1,16,411	₹ 1,25,827	₹ 1,44,659	₹ 1,54,075
115	Urology	Cystoscopy Urs & Dj Stenting Bilateral Cost Of Stent	2	₹ 1,27,395	₹ 1,43,744	₹ 1,54,160	₹ 1,74,992	₹ 18,540
116	Urology	Turbt	4	₹ 1,28,790	₹ 1,56,988	₹ 1,73,320	₹ 2,05,984	₹ 2,22,316
117	Urology	Orchidectomy Unilateral	2	₹ 53,395	₹ 66,744	₹ 74,160	₹ 88,992	₹ 96,408
118	Urology	Orchidectomy Bilateral	2	₹ 75,395	₹ 90,244	₹ 99,160	₹ 1,16,992	₹ 1,25,908
119	Urology	Orchidectomy High Uro Onco Bilateral	2	₹ 75,395	₹ 90,244	₹ 99,160	₹ 1,16,992	₹ 1,25,908
120	Urology	Viu	2	₹ 75,395	₹ 90,244	₹ 99,160	₹ 1,16,992	₹ 1,25,908

121	Urology	Urethroplasty Buccal Graft)	3	₹ 1,23,426	₹ 1,45,949	₹ 1,59,573	₹ 1,86,821	₹ 2,00,445
122	Urology	Panurethroplasty Buccal Graft	4	₹ 1,77,124	₹ 2,07,821	₹ 2,26,653	₹ 2,64,317	₹ 2,83,149
123	Urology	End To End Urethroplasty Buccal Graft	4	₹ 1,77,124	₹ 2,07,821	₹ 2,26,653	₹ 2,64,317	₹ 2,83,149
		Ophthalmology procedure	No of Days	Package rate for surgery under Local anaesthesia	Add on for GA	Add on for Ocular co morbidity	Add on for private room	Add on For Suite
124	Ophthalmology	Cataract (Including Lens)-Phaco With Unifocal Lens (Spectacle Dependency Surgery)	Day care	₹ 44,000	Plus 10000	Add 3500 per ocular co morbidity	Add 15000	Add 25000
125	Ophthalmology	Cataract (Including Lens)-Mics With Unifocal Lens (Spectacle Dependency Surgery)	Day care	₹ 51,500	Plus 10000	Add 3500 per ocular co morbidity	Add 15000	Add 25000
126	Ophthalmology	Cataract (Including Lens)-Phaco With Foldable Lens (Reduced Spectacle Dependency Surgery)	Day care	₹ 78,000	Plus 10000	Add 3500 per ocular co morbidity	Add 15000	Add 25000
127	Ophthalmology	Cataract (Including Lens)-Mics With Foldable Lens (Reduced Spectacle Dependency Surgery)	Day care	₹ 86,000	Plus 10000	Add 3500 per ocular co morbidity	Add 15000	Add 25000
128	Ophthalmology	Vitrectomy	Day care	₹ 82,000	Plus 14000	Add 3500 per ocular co morbidity	Add 15000	Add 25000
129	Ophthalmology	Vitrectomy With Gas Temponade	Day care	₹ 88,000	Plus 14000	Add 3500 per ocular co morbidity	Add 15000	Add 25000
130	Ophthalmology	Vitrectomy With Silicone Temponade	Day care	₹ 92,000	Plus 14000	Add 3500 per ocular co morbidity	Add 15000	Add 25000

131	Ophthalmology	Vitrectomy -Membrane Peeling- Endolaser-Gas/ Silicone Tamponade	Day care	₹ 96,000	Plus 14000	Add 3500 per ocular comorbidity	Add 15000	Add 25000
132	Ophthalmology	Vitrectomy (Sutureless) +Membrane Peeling- Endolaser-Gas/ Silicone Tamponade	Day care	₹ 98,000	Plus 14000	Add 3500 per ocular comorbidity	Add 15000	Add 25000
133	Ophthalmology	Trabeculectomy With Mmc / 5Fluorouracil	Day care	₹ 58,000	Plus 10000	Add 3500 per ocular comorbidity	Add 15000	Add 25000
134	Ophthalmology	Trabeculectomy With Ologen	Day care	₹ 69,000	Plus 10000	Add 3500 per ocular comorbidity	Add 15000	Add 25000
135	Ophthalmology	Retinal Detachment- Scleral Buckling	Day care	₹ 77,000	Plus 14000	Add 3500 per ocular comorbidity	Add 15000	Add 25000
136	Ophthalmology	C3R-Corneal Collagen Cross Linking With Riboflavin	Day care	₹ 44,000	Plus 10000	Add 3500 per ocular comorbidity	Add 15000	Add 25000

Open Billing Guidelines for other Surgeries

1. Bed charges

Gen Ward: 3000 + 1000 + 1000

Semi Private: 4000 + 1250 + 1250

Pvt: 4800 + 1500 + 1500

Deluxe: 6000 + 1800 + 1800

Suite: Open to the discretion of the Hospital & not be less than Deluxe room

2. Investigations charges for the IP cases

50% Markup increment from OPD rate

25% Markup increase by the bed category

i. Gen ward: 150% of OP test rate.

ii. Semi private: 175%,

iii. Pvt: 200%,

iv. Deluxe: 225%

v. Suite: 250%

3. Consultant Fee sharing with a consultant

Consultant: 80%

Hospital: 20%

4. Surgeon's fee: Max 20% of the bill (excluding the complications cost and excluding ICU cost)

Or as decided by the Consultant Surgeon & Hospital together.

5. OT Charge: 100% of the Surgeon's fee

or 20% of the Bill

or 20K /hr for the 1st 2 hrs, 15K/hr thereafter whichever is higher.

6. Anaesthetist fee: 25-33% of the Surgeon's fee

7. Asst Surgeon: 33% of the Surgeon's fee

8. **Implants:** The hospital receives @ MRP or Min 20% Handling cost on landing charges whichever is the lower.

9. Pharmacy & Consumables @ MRP.

10. Equipment Rentals: Minimum 10% Addition to the landing rental charges

11. Special equipments(Own investment between less than 50L) : 15 K ,
(Own or Rental) (Own investment 50 to 75L) : 20 K
 (Own investment more than 75L) : 30 K

12. Any 2nd Surgery through the same incision by **the same specialist/ Surgeon:** the second surgery can be charged @ 50%, additional surgeries @ 25%

13. Any Bilateral surgeries done in separate sittings the 2nd side to be charged @ 100% in a single admission

14. Any Bilateral Surgery is done in the same sitting the 2nd side to be charged @ 75% in a single admission.

15. Anaesthesia Gases(Sevo/Isoflorine): @ MRP (32-35) per ml

16. Oxygen charges in the ward: Rs 125/hr

17. Recovery room charges(in case of Day surgery): 1500/hr.

18. Daycare (any hospitalization less than 4hrs) charges Room charges divided by 4.

Eg: $3000/4=750$ for Gen ward + Nurses + Duty Doctor charges as usual
 $4800/4=1200$ for Pvt room + Nurses + Duty Doctor charges as usual

19. Dialysis: 2500/dialysis

20. Incase if you want to make the single bill package: Metros :

(Number of ALOS x 37000) + Surgeon's fee+ High end instrumentation+implants/Expensive consumables

Non Metros: ((Number of ALOS x 29000) + Surgeon's fee+ High end instrumentation+implants/Expensive consumables

Medical admission billing guidelines

1. Bed charges

Gen Ward: 3000 + 1000 + 1000

Semi Private: 4000 + 1250 + 1250

Pvt: 4800 + 1500 + 1500

Deluxe: 6000 + 1800 + 1800

Suite: Open to the discretion of the Hospital & not be less than Deluxe room

2. Investigations charges for the IP cases

50% increment from OPD rate

25% increase by each bed category

i. Gen ward: 150% of OP test rate.

ii. Semi private: 175%,

iii. Pvt: 200%,

iv. Deluxe: 225%

v. Suite: 250%

3. Consultant Fee sharing with a consultant

Consultant: 80%

Hospital: 20%

ICU admission billing guidelines

C. ICU Billing Formula:

- 1. **Bed charges** : as per the Pvt room charges
- 1. **Nursing charges** : as per the Pvt room charges
- 1. **Resident ICU doctors:** as per the Pvt room charges
- 1. **Ventilator:** Rs 5500/day
- 1. **Oxygen** : Rs 3000/day
- 1. **Infusion/syringe Pumps:** Rs 2000/day/pump
- 1. **Investigations:** as per Pvt room markup
- 1. **ICU Dialysis:** 3500/dialysis
- 1. **Intensivist fee:** Rs 2000/visit
- 1. **Consultant** fee markup: minimum of 20% addition to non ICU IP Visit charges



Costing & Pricing Exercise

PHANA- Karnataka

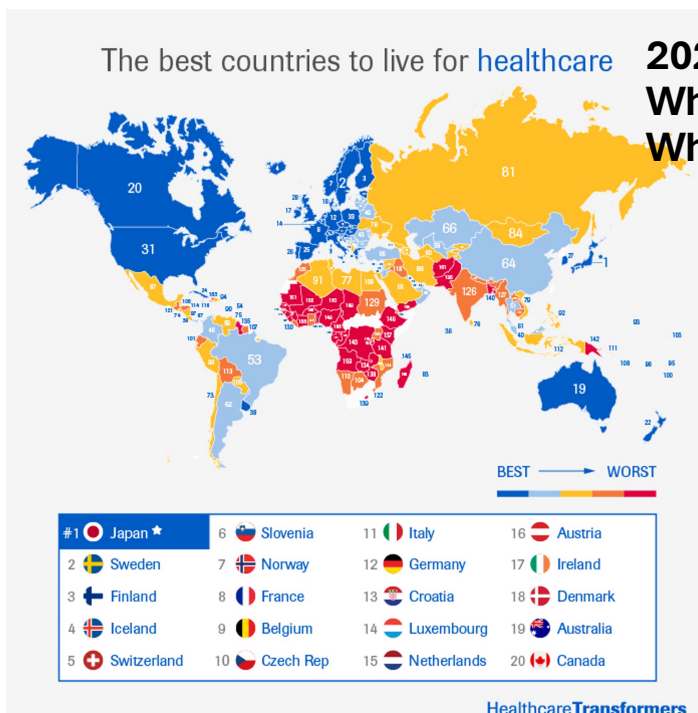
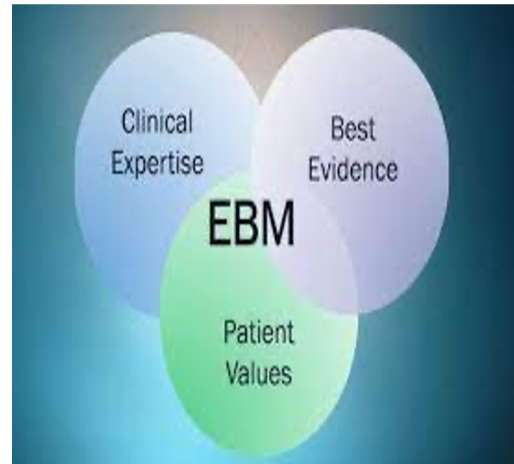
What's our Mind Set?



What is meant by evidence-based medicine? & Why???



- Evidence based medicine (EBM) is the conscientious, explicit, judicious and reasonable use of modern, best evidence in making decisions about the care of individual patients.
- EBM integrates clinical experience and patient values with the best available research information.
- Are we following it???



2022 Survey
Where does INDIA rank?
Why?, How can we change?



India - 126

Malaysia - 61

China - 64

Srilanka - 76

Iran - 88

Cost and product pricing help us:

- Know whether we are *profiting* or *losing*.
- Aid in Business *Management decision* making.
- Know the *correct pricing* and to *maximize Profit*

Scientific COSTING



How to measure the *cost*?

Scientific COSTING Simple Steps to understand cost:



1. List all Cost
2. Classify
 1. Staff cost
 2. Materials
 3. Administrative Over head Cost
 - I. Insurance
 - II. Travel
 - III. R&M
 - IV. Promotions & Communications
 4. Deprecation Charges
 5. Finance Expenses
3. Analyze The behavior
 - a. Direct Cost
 - b. Variable Cost
4. Know about your Volume of work & Occupancy for a Given period and season (Month)

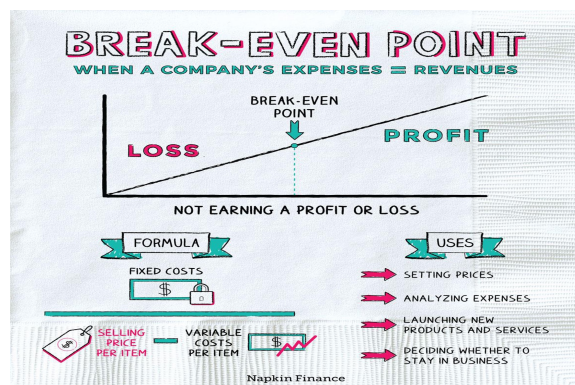


Scientific COSTING

Why do we need to *measure* the cost??



- It provides the dynamic overview of relationships among revenues, Cost & Profits
- This is why Comparison of Break-even points are generally meaningful
 - The price of the product
 - The profitability of the services
- Knowing Cost Per Bed/Per Day will in turn determine





Scientific COSTING Costing Lines



		25 Beds	50 Beds	100 Beds
Doctor Fees	Fees to Guarantee Money Doctors	12,50,000	25,00,000	50,00,000
Material Cost	Material Consumption - Freight & Customs	20,00,000	40,00,000	65,00,000
Other Operative	Electricity Charges	2,20,000	4,00,000	8,00,000
	Fuel Charges	25,000	80,000	1,00,000
	Water Charges	35,000	1,00,000	1,25,000
	House Keeping Expenses	50,000	1,00,000	2,50,000
	Nurses Hostel Expenses	1,25,000	2,30,000	4,50,000
	Directors Remuneration	5,00,000	10,00,000	10,00,000
Employee Cost	Salaries - Employees	33,95,000	55,63,000	1,10,00,000
	Bonus	2,82,917	4,63,583	22,00,000
	Ex-Gratia	1,41,458	2,31,792	11,00,000
	Gratuity Premium	1,00,000	1,50,000	2,00,000
	Leave Encashment	1,41,458	2,31,792	4,58,333
	Premium-Medical Insurance			83,333
	Contribution to PF	2,26,000	3,64,000	7,36,000
	Contribution to PPF	2,26,000	3,64,000	7,36,000
	Contribution to ESI	1,10,338	1,80,798	3,57,500
	Staff Welfare Expenses	67,900	1,11,260	2,20,000
	Annual Day Expenses	67,900	1,11,260	2,20,000
	Recruitment Expense	1,01,850	1,66,890	3,30,000
	Staff Training Costs	67,900	1,11,260	2,20,000
	Food And Beverages	3,00,000	6,00,000	12,00,000
	Outsourcing Expenses - Others	25,000	50,000	1,00,000
	Outsourcing Expenses - Bio	15,000	30,000	25,000
	Rent- Paid including Property Tax	7,08,000	23,60,000	40,00,000
	Rates and Taxes - Others	1,50,000	3,00,000	8,00,000
	Insurance - Professional Indemnity	25,000	25,000	25,000
	Insurance - Fixed Assets	25,000	25,000	25,000
	Insurance - Others	50,000	50,000	50,000
	R & M - Plant & Machinery & Building	50,000	1,00,000	2,00,000
	R & M Buildings			
	R & M - Vehicles	10,000	10,000	10,000
	R & M - Office Equipments	25,000	40,000	50,000
	R & M - Furnitures & Fixtures	20,000	30,000	40,000
	R & M - Others			
	Travel Expenses - Directors	12,000	24,000	50,000
	Travel Expenses - Employees	24,000	40,000	50,000
	Travel Expenses - Others	10,000	20,000	50,000
	Foreign Travel Exp - Directors			
	Foreign Travel Exp - Employees			
	Foreign Travel Exp - Others			
	Local Conveyance	10,000	20,000	40,000
	Vehicle - Fuel Expenses			

Scientific COSTING Administrative Cost



	Directors Sitting Fees			
	Audit Fees - Statutory	20,000	40,000	50,000
	Audit Fees - Certification	20,000	40,000	50,000
Audit Fees	Audit Fees - Other Services	20,000	40,000	50,000
	Reimbursement of Expenses	5,000	10,000	20,000
	Postage & Telegrams	2,000	3,000	4,000
	Courier Charges			
	Telephone Expenses	20,000	40,000	40,000
	Mobile Expenses			
	Telex Expenses			
	Communication Expenses - Others	10,000	20,000	20,000
	Legal Fees	50,000	50,000	1,00,000
	Internal Audit Fees	5,000	10,000	20,000
	Consultancy Charges	15,000	30,000	40,000
	Retainer Fees	15,000	25,000	1,00,000
	Legal and Professional Charges -			
	Membership Fees	5,000	10,000	20,000
	Subscription Others			
	Printing and Stationery - Annual	50,000	1,00,000	1,50,000
	Printing and Stationery - Photocopy	25,000	50,000	1,00,000
	Printing and Stationery - Promotional	25,000	50,000	1,00,000
	Printing and Stationery - Others			
	Service Charges to Information			
	Seminars and Conferences			
	COC	3,00,000	4,00,000	10,00,000
	Gifts	5,000	10,000	20,000
	Entertainment Expenses			
	Advertisement - TV			
	Advertisement - Press			
	Advertisement - Hoardings			
	Advertisement - Statutory			
	Advertisement - Others	25,000	50,000	1,00,000
	Bad Debts Written Off	50,000	70,000	1,00,000
	Provision for Doubtful debts	50,000	70,000	1,00,000
	Loss on Sale of Assets			
	Profit on Sale of Assets			
	Security Charges			
	Books & Periodicals	2,000	4,000	8,000
	Donation	10,000	20,000	50,000
	AGM/Board Meeting Expenses			
	Hiring Charges	30,000	50,000	1,00,000
	Rounding Distribution	5,000	10,000	20,000
	Expenses- Other	15,000	20,000	20,000
	General Expenses			
	Puja Expenses	10,000	10,000	10,000
	Course Fee Expenses	5,000	5,000	10,000
	Prior Period Expenses			
	CSR - Health			
	CSR - Education			
	CSR - Rural Development			



Scientific COSTING Financial



Depreciation	Depreciation - Buildings			
	Depreciation - Medical Equipment	6,66,667	13,33,333	54,16,667
	Depreciation - Electrical			
	Depreciation - Plant & Machinery			
	Depreciation - Office equipments			
	Depreciation - Computers			
	Depreciation - Furniture & Fixtures			
	Depreciation - Vehicles			
	Amortisation - Intangible Assets			

Finance Expenses	Exchange Difference - Loss on			
	Loss on Sale of Investments			
	Bank DD Charges	200	1,000	2,000
	Bank Guarantee Charges	500	1,000	2,000
	Bank LC Charges			
	Bank Charges - Others	5,833	9,333	11,667
	Interest on Term Loans	3,00,000	7,00,000	22,00,000
	Interest on Fixed Deposits			
	Interest on Debentures			
	Interest on Working Capital			
	Interest Others			
	Lease Rent on Equipments			
	Brokerage and Commission			

Scientific COSTING Staff Cost & Head Count



Average Salary/ Month	Designation	Beds			Manpower Cost	Beds			HR Cost /Cost
		25	50	100		25	50	100	
50000	Doctors	9	14	40	4,50,000	7,00,000	20,00,000	-	
30000	Nursing staff	25	46	100	7,50,000	13,80,000	30,00,000	-	
20000	Nursing Aid	6	8	20	1,20,000	1,60,000	4,00,000	-	
40000	OT Technician	5	6	12	2,00,000	2,40,000	4,80,000	-	
22000	Lab Tech	4	8	16	88,000	1,76,000	3,52,000	-	
35000	Physio	2	4	4	70,000	1,40,000	1,40,000	-	
25000	Radiology	4	5	5	1,00,000	1,25,000	1,25,000	-	
22000	CSSD	2	4	5	44,000	88,000	1,10,000	-	
21000	HK	15	30	60	3,15,000	6,30,000	12,60,000	-	
80000	Admin	1	2	4	80,000	1,60,000	3,20,000	-	
25000	CRC	8	10	25	2,00,000	2,50,000	6,25,000	-	
50000	Marketing	2	4	6	1,00,000	2,00,000	3,00,000	-	
30000	Purchase Store	2	3	5	60,000	90,000	1,50,000	-	
20000	Pharmacy	4	4	6	80,000	80,000	1,20,000	-	
30000	Engineering	4	5	6	1,20,000	1,50,000	1,80,000	-	
20000	F&B	8	12	30	1,60,000	2,40,000	6,00,000	-	
24000	Security	8	12	15	1,92,000	2,88,000	3,60,000	-	
22000	ambulance	3	3	7	66,000	66,000	1,54,000	-	
20000	MD	1	2	2	2,00,000	4,00,000	4,00,000	-	
	Total	113	182	368	33,95,000	55,63,000	1,10,76,000	-	
	Ratio Staff/Bed	4.52	3.64	3.68	40%	34%	37%	HR Cost /Cost	



Scientific COSTING Cost Per Bed/Day



Total cost Per Month				1,23,59,921	2,34,65,301	4,88,35,500	3,10,94,765
Beds				METRO 25 BEDS	METRO 50 BEDS	METRO 100 BEDS	TIER 2 CITY 100 BEDS
Occupancy	25	50	100	4,11,997	7,82,177	16,27,850	10,36,492
40%	10	20	40	41,200	39,109	40,696	25,912
50%	12.5	25	50	32,960	31,287	32,557	20,729
60%	15	30	60	27,466	26,073	27,131	17,274
75%	18.75	37.5	75	21,973	20,858	21,705	13,819
Average Cost Per bed/day				30,900	29,332	30,522	19,434

			METRO 25 Beds	METRO 50 BEDS	METRO 100 BEDS	TIER 2 City Reference (100 beds)
PHANA Minimal Per Bed/ Day Charges	20% Margin		37080	35198	36627	23,321.07

Importance of BED occupancy and Profitability. Ex, With same tariff, at 40% occupancy, you may end up with

% Occupancy	75%	60%	50%	40%
Profit Margin	60%	30	9%	-13%

Scientific COSTING Minimum charges Per Bed/ Per Day



		Metro City	Tier 2 City
General Ward	20% Less	26698	19434
Semi Private	10% Less	33372	21350
Private	Reference	37080	23321
Deluxe	20% Premium	44496	27985
Suite Executive	30% Premium	48204	30780

The following table is NOT to be confused with recommended rates. This list is to HIGHLIGHT the minimum rates.

CHARGING LESS THAN THIS IS INDICATIVE OF QUALITY COMPROMISE UNLESS YOU ARE GETTING DONATIONS/DOING CHARITY.

NOT LESS THAN THESE.....MINIMUM RATES

ALOS (Anticipat ed length of Stay)	Procedure	General Ward	Semi Private	Private	Delux	Suite Executive	Remarks
	Minimum Cost per day per surgical bed	₹ 26,698	₹ 33,372	₹ 37,080	₹ 44,496	₹ 48,204	To add cost of special consumm ables,spe cial equipmen ts,senior/ experienc ed/super specialist fees)
3	Mastoidect omy + Tympanopl asty - Including Meatoplast y + Ossiculop lasty + Canaloplas ty	₹ 80,093	₹ 1,00,116	₹ 1,11,240	₹ 1,33,488	₹ 1,44,612	To add cost of special consumm ables,spe cial equipmen ts,senior/ experienc ed/super specialist fees)
3	FESS + Septoplast y with turbinecto my or polypecto my/ conchopla sty - Unilateral	₹ 80,093	₹ 1,00,116	₹ 1,11,240	₹ 1,33,488	₹ 1,44,612	To add cost of special consumm ables,spe cial equipmen ts,senior/ experienc ed/super specialist fees)

3	Full House FESS + Septoplasty with turbinectomy or Polypectomy/ Conchoplasty - Bilateral	₹ 80,093	₹ 1,00,116	₹ 1,11,240	₹ 1,33,488	₹ 1,44,612	To add cost of special consumables, special equipments, senior/ experienced/super specialist fees)
3	Tympanoplasty - All Types of Tympanoplasty Including Canaloplasty	₹ 80,093	₹ 1,00,116	₹ 1,11,240	₹ 1,33,488	₹ 1,44,612	To add cost of special consumables, special equipments, senior/ experienced/super specialist fees)
2	Tonsillectomy -	₹ 53,395	₹ 66,744	₹ 74,160	₹ 88,992	₹ 96,408	To add cost of special consumables, special equipments, senior/ experienced/super specialist fees)
2	Tonsillectomy & Adenoidectomy	₹ 53,395	₹ 66,744	₹ 74,160	₹ 88,992	₹ 96,408	To add cost of special consumables, special equipments, senior/ experienced/super specialist fees)
2	Tonsillectomy - Including Coblation Wand & LASER charges	₹ 53,395	₹ 66,744	₹ 74,160	₹ 88,992	₹ 96,408	To add cost of special consumables, special equipments, senior/ experienced/super specialist fees)

2	Adenoidectomy - Including Coblation Wand & LASER charges	₹ 53,395	₹ 66,744	₹ 74,160	₹ 88,992	₹ 96,408	To add cost of special consumables, special equipments, senior/experienced/super specialist fees)
3	Microlaryngeal excision of Nodule/ Polyp/ Cysts	₹ 80,093	₹ 1,00,116	₹ 1,11,240	₹ 1,33,488	₹ 1,44,612	To add cost of special consumables, special equipments, senior/experienced/super specialist fees)
1	Myringotomy with grommet insertion- Unilateral	₹ 26,698	₹ 33,372	₹ 37,080	₹ 44,496	₹ 48,204	To add cost of special consumables, special equipments, senior/experienced/super specialist fees)
1	Myringotomy with grommet insertion Bilateral	₹ 26,698	₹ 33,372	₹ 37,080	₹ 44,496	₹ 48,204	To add cost of special consumables, special equipments, senior/experienced/super specialist fees)
2	Stapedectomy / Stapedotomy	₹ 53,395	₹ 66,744	₹ 74,160	₹ 88,992	₹ 96,408	To add cost of special consumables, special equipments, senior/experienced/super specialist fees)

3	Septoplasty (Extra Corporeal)	₹ 80,093	₹ 1,00,116	₹ 1,11,240	₹ 1,33,488	₹ 1,44,612	To add cost of special consummables, special equipments, senior/experienced/super specialist fees)
3	Open - Appendectomy (Pediatric/ Adult)	₹ 80,093	₹ 1,00,116	₹ 1,11,240	₹ 1,33,488	₹ 1,44,612	To add cost of special consummables, special equipments, senior/experienced/super specialist fees)
2	Laparoscopic - Appendectomy (Pediatric/ Adult)	₹ 69,404	₹ 84,754	₹ 94,172	₹ 1,13,006	₹ 1,22,423	To add cost of special consummables, special equipments, senior/experienced/super specialist fees)
2	Laparoscopic - Cholecystectomy (Pediatric/ Adult)	₹ 53,395	₹ 66,744	₹ 74,160	₹ 88,992	₹ 96,408	To add cost of special consummables, special equipments, senior/experienced/super specialist fees)
1	Circumcision (Day Care)	₹ 26,698	₹ 33,372	₹ 37,080	₹ 44,496	₹ 48,204	To add cost of special consummables, special equipments, senior/experienced/super specialist fees)

1	Fissurectomy with Sphincterotomy	₹ 26,698	₹ 33,372	₹ 37,080	₹ 44,496	₹ 48,204	To add cost of special consumables, special equipments, senior/experienced/super specialist fees)
2	Fistulectomy - Low (Including cost of Laser)	₹ 53,395	₹ 66,744	₹ 74,160	₹ 88,992	₹ 96,408	To add cost of special consumables, special equipments, senior/experienced/super specialist fees)
2	Fistulectomy - High (Including cost of Laser)	₹ 53,395	₹ 66,744	₹ 74,160	₹ 88,992	₹ 96,408	To add cost of special consumables, special equipments, senior/experienced/super specialist fees)
2	Haemorrhoidectomy - (Stapler / Routine) - Excluding Cost of Stapler	₹ 53,395	₹ 66,744	₹ 74,160	₹ 88,992	₹ 96,408	To add cost of special consumables, special equipments, senior/experienced/super specialist fees)
2	Haemorrhoidectomy + Fissurectomy - Staples and Tackers Excluded	₹ 53,395	₹ 66,744	₹ 74,160	₹ 88,992	₹ 96,408	To add cost of special consumables, special equipments, senior/experienced/super specialist fees)

2	Herniorrap hy - Inguinal	₹ 53,395	₹ 66,744	₹ 74,160	₹ 88,992	₹ 96,408	To add cost of special consumm ables,spe cial equipmen ts,senior/ experien ced/super specialist fees)
2	Hernioplas ty - Inguinal / Femoral - Unilateral - Including Mesh cost worth Rs.7000	₹ 53,395	₹ 66,744	₹ 74,160	₹ 88,992	₹ 96,408	To add cost of special consumm ables,spe cial equipmen ts,senior/ experien ced/super specialist fees)
2	Hernioplas ty - Inguinal / Femoral - Bilateral - Including Mesh cost worth Rs.7000	₹ 53,395	₹ 66,744	₹ 74,160	₹ 88,992	₹ 96,408	To add cost of special consumm ables,spe cial equipmen ts,senior/ experien ced/super specialist fees)
3	Hernioplas ty - Umblical / Paraumblic al - Including Mesh cost worth Rs.7000	₹ 80,093	₹ 1,00,116	₹ 1,11,240	₹ 1,33,488	₹ 1,44,612	To add cost of special consumm ables,spe cial equipmen ts,senior/ experien ced/super specialist fees)
4	Hernioplas ty - Incisional / Ventral - Including Mesh cost worth Rs.7000	₹ 1,06,790	₹ 1,33,488	₹ 1,48,320	₹ 1,77,984	₹ 1,92,816	To add cost of special consumm ables,spe cial equipmen ts,senior/ experien ced/super specialist fees)

2	Laparoscopic Hernioplasty - Inguinal - Unilateral - Including Mesh cost worth Rs.7000 ; Tackers Excluded	₹ 69,404	₹ 84,754	₹ 94,172	₹ 1,13,006	₹ 1,22,423	To add cost of special consumm ables,spe cial equipmen ts,senior/ experienc ed/super specialist fees)
2	Laparoscopic Hernioplasty - Inguinal - Bilateral - Including Mesh cost worth Rs.7000 ; Tackers Excluded	₹ 69,404	₹ 84,754	₹ 94,172	₹ 1,13,006	₹ 1,22,423	To add cost of special consumm ables,spe cial equipmen ts,senior/ experienc ed/super specialist fees)
2	Laparoscopic Hernioplasty - Umbilical / Paraumblic al - Excluding Mesh & Tackers	₹ 69,404	₹ 84,754	₹ 94,172	₹ 1,13,006	₹ 1,22,423	To add cost of special consumm ables,spe cial equipmen ts,senior/ experienc ed/super specialist fees)
3	Laparoscopic Hernioplasty - Incisional / Ventral Mesh & Tackers Excluded	₹ 96,102	₹ 1,18,126	₹ 1,31,252	₹ 1,57,502	₹ 1,70,627	To add cost of special consumm ables,spe cial equipmen ts,senior/ experienc ed/super specialist fees)
5	Open Right or Left Hemicolect omy	₹ 1,33,488	₹ 1,66,860	₹ 1,85,400	₹ 2,22,480	₹ 2,41,020	To add cost of special consumm ables,spe cial equipmen ts,senior/ experienc ed/super specialist fees)

5	Lap Right or Left Hemicolectomy	₹ 1,49,497	₹ 1,84,870	₹ 2,05,412	₹ 2,46,494	₹ 2,67,035	To add cost of special consummables, special equipments, senior/experienced/super specialist fees)
2	Lymph Node Biopsy (Cervical / Axillary / Inguinal) - Under GA	₹ 53,395	₹ 66,744	₹ 74,160	₹ 88,992	₹ 96,408	To add cost of special consummables, special equipments, senior/experienced/super specialist fees)
1	Lipoma - Under GA	₹ 26,698	₹ 33,372	₹ 37,080	₹ 44,496	₹ 48,204	To add cost of special consummables, special equipments, senior/experienced/super specialist fees)
2	Perianal Abcess (I&D)	₹ 53,395	₹ 66,744	₹ 74,160	₹ 88,992	₹ 96,408	To add cost of special consummables, special equipments, senior/experienced/super specialist fees)
3	Pilonidal Sinus With Flap Cover	₹ 80,093	₹ 1,00,116	₹ 1,11,240	₹ 1,33,488	₹ 1,44,612	To add cost of special consummables, special equipments, senior/experienced/super specialist fees)

3	Pilonidal Sinus Without Flap Cover	₹ 80,093	₹ 1,00,116	₹ 1,11,240	₹ 1,33,488	₹ 1,44,612	To add cost of special consummables, special equipments, senior/experienced/super specialist fees)
4	Modified Radical Mastectomy	₹ 1,06,790	₹ 1,33,488	₹ 1,48,320	₹ 1,77,984	₹ 1,92,816	To add cost of special consummables, special equipments, senior/experienced/super specialist fees)
2	Simple Mastectomy	₹ 53,395	₹ 66,744	₹ 74,160	₹ 88,992	₹ 96,408	To add cost of special consummables, special equipments, senior/experienced/super specialist fees)
1	Breast Lumpectomy	₹ 26,698	₹ 33,372	₹ 37,080	₹ 44,496	₹ 48,204	To add cost of special consummables, special equipments, senior/experienced/super specialist fees)
3	Thyroidectomy	₹ 80,093	₹ 1,00,116	₹ 1,11,240	₹ 1,33,488	₹ 1,44,612	To add cost of special consummables, special equipments, senior/experienced/super specialist fees)

2	Surgery for varicose veins saphenofemoral ligation and stripping / sclerotherapy - Unilateral	₹ 53,395	₹ 66,744	₹ 74,160	₹ 88,992	₹ 96,408	To add cost of special consummables, special equipments, senior/experienced/super specialist fees)
2	Varicose veins - Radiofrequency ablation, endovenous laser treatment - Including Cost of Laser and Catheter	₹ 53,395	₹ 66,744	₹ 74,160	₹ 88,992	₹ 96,408	To add cost of special consummables, special equipments, senior/experienced/super specialist fees)
1	Wound debridement - Minor	₹ 26,698	₹ 33,372	₹ 37,080	₹ 44,496	₹ 48,204	To add cost of special consummables, special equipments, senior/experienced/super specialist fees)
2	Wound debridement - Major	₹ 53,395	₹ 66,744	₹ 74,160	₹ 88,992	₹ 96,408	To add cost of special consummables, special equipments, senior/experienced/super specialist fees)
3	Open Hysterectomy - Abdominal - With or Without BSO and adhesiolysis	₹ 80,093	₹ 1,00,116	₹ 1,11,240	₹ 1,33,488	₹ 1,44,612	To add cost of special consummables, special equipments, senior/experienced/super specialist fees)

3	Lap Hysterectomy - Abdominal - With or Without BSO and adhesiolysis - Laparoscopic	₹ 96,102	₹ 1,18,126	₹ 1,31,252	₹ 1,57,502	₹ 1,70,627	To add cost of special consummables, special equipments, senior/experienced/super specialist fees)
3	Hysterectomy - Vaginal	₹ 80,093	₹ 1,00,116	₹ 1,11,240	₹ 1,33,488	₹ 1,44,612	To add cost of special consummables, special equipments, senior/experienced/super specialist fees)
3	Hysterectomy - LAVH -	₹ 80,093	₹ 1,00,116	₹ 1,11,240	₹ 1,33,488	₹ 1,44,612	To add cost of special consummables, special equipments, senior/experienced/super specialist fees)
3	Hysterectomy - Vaginal - With Pelvic Floor Repair	₹ 80,093	₹ 1,00,116	₹ 1,11,240	₹ 1,33,488	₹ 1,44,612	To add cost of special consummables, special equipments, senior/experienced/super specialist fees)
3	Hysterectomy - LAVH - With Pelvic Floor Repair	₹ 80,093	₹ 1,00,116	₹ 1,11,240	₹ 1,33,488	₹ 1,44,612	To add cost of special consummables, special equipments, senior/experienced/super specialist fees)

1	D&C	₹ 26,698	₹ 33,372	₹ 37,080	₹ 44,496	₹ 48,204	To add cost of special consummables, special equipments, senior/experienced/super specialist fees)
2	D & C with Hysteroscopy (Day Care)	₹ 53,395	₹ 66,744	₹ 74,160	₹ 88,992	₹ 96,408	To add cost of special consummables, special equipments, senior/experienced/super specialist fees)
3	Open - Ruptured Ectopic Pregnancy	₹ 80,093	₹ 1,00,116	₹ 1,11,240	₹ 1,33,488	₹ 1,44,612	To add cost of special consummables, special equipments, senior/experienced/super specialist fees)
2	Laparoscopic - Ruptured Ectopic Pregnancy	₹ 69,404	₹ 84,754	₹ 94,172	₹ 1,13,006	₹ 1,22,423	To add cost of special consummables, special equipments, senior/experienced/super specialist fees)
5	Open - Wertheims with Node dissection	₹ 1,33,488	₹ 1,66,860	₹ 1,85,400	₹ 2,22,480	₹ 2,41,020	To add cost of special consummables, special equipments, senior/experienced/super specialist fees)

5	Laparoscopic - Wertheims with Node dissection	₹ 1,49,497	₹ 1,84,870	₹ 2,05,412	₹ 2,46,494	₹ 2,67,035	To add cost of special consummables, special equipments, senior/experienced/super specialist fees)
3	Open - Myomectomy	₹ 80,093	₹ 1,00,116	₹ 1,11,240	₹ 1,33,488	₹ 1,44,612	To add cost of special consummables, special equipments, senior/experienced/super specialist fees)
2	Laparoscopic - Myomectomy	₹ 69,404	₹ 84,754	₹ 94,172	₹ 1,13,006	₹ 1,22,423	To add cost of special consummables, special equipments, senior/experienced/super specialist fees)
3	Ovarian Cystectomy - Open	₹ 80,093	₹ 1,00,116	₹ 1,11,240	₹ 1,33,488	₹ 1,44,612	To add cost of special consummables, special equipments, senior/experienced/super specialist fees)
2	Ovarian Cystectomy - Laparoscopic	₹ 69,404	₹ 84,754	₹ 94,172	₹ 1,13,006	₹ 1,22,423	To add cost of special consummables, special equipments, senior/experienced/super specialist fees)

2	Normal Delivery with Well Baby Care(Single/Twins)	₹ 53,395	₹ 66,744	₹ 74,160	₹ 88,992	₹ 96,408	To add cost of special consummables,special equipments,senior/experienced/super specialist fees)
3	LSCS with Well Baby Care(Single/Twins)	₹ 80,093	₹ 1,00,116	₹ 1,11,240	₹ 1,33,488	₹ 1,44,612	To add cost of special consummables,special equipments,senior/experienced/super specialist fees)
3	ACL Reconstruction - Excluding Cost of Implant	₹ 80,093	₹ 1,00,116	₹ 1,11,240	₹ 1,33,488	₹ 1,44,612	To add cost of special consummables,special equipments,senior/experienced/super specialist fees)
3	PCL Reconstruction - Excluding Cost of Implant	₹ 80,093	₹ 1,00,116	₹ 1,11,240	₹ 1,33,488	₹ 1,44,612	To add cost of special consummables,special equipments,senior/experienced/super specialist fees)
4	ACL & PCL Reconstruction - Excluding Cost of Implant	₹ 1,06,790	₹ 1,33,488	₹ 1,48,320	₹ 1,77,984	₹ 1,92,816	To add cost of special consummables,special equipments,senior/experienced/super specialist fees)

4	ACL ,PCL & MCL Reconstruction - Excluding Cost of Implant	₹ 1,06,790	₹ 1,33,488	₹ 1,48,320	₹ 1,77,984	₹ 1,92,816	To add cost of special consummables,special equipments,senior/experienced/super specialist fees)
2	Menisectomy	₹ 53,395	₹ 66,744	₹ 74,160	₹ 88,992	₹ 96,408	To add cost of special consummables,special equipments,senior/experienced/super specialist fees)
2	Meniscus Repair	₹ 53,395	₹ 66,744	₹ 74,160	₹ 88,992	₹ 96,408	To add cost of special consummables,special equipments,senior/experienced/super specialist fees)
1	Carpal Tunnel Release (U/L) Open	₹ 26,698	₹ 33,372	₹ 37,080	₹ 44,496	₹ 48,204	To add cost of special consummables,special equipments,senior/experienced/super specialist fees)
1	Carpal Tunnel Release (U/L) Microscopic	₹ 26,698	₹ 33,372	₹ 37,080	₹ 44,496	₹ 48,204	To add cost of special consummables,special equipments,senior/experienced/super specialist fees)

1	Closed Reduction - Dislocation - Minor	₹ 26,698	₹ 33,372	₹ 37,080	₹ 44,496	₹ 48,204	To add cost of special consummables, special equipments, senior/experienced/super specialist fees)
1	Closed Reduction - Dislocation - Major	₹ 26,698	₹ 33,372	₹ 37,080	₹ 44,496	₹ 48,204	To add cost of special consummables, special equipments, senior/experienced/super specialist fees)
2	Implant Removal - Minor (Except K-Wire)	₹ 53,395	₹ 66,744	₹ 74,160	₹ 88,992	₹ 96,408	To add cost of special consummables, special equipments, senior/experienced/super specialist fees)
2	Implant Removal - Major	₹ 53,395	₹ 66,744	₹ 74,160	₹ 88,992	₹ 96,408	To add cost of special consummables, special equipments, senior/experienced/super specialist fees)
2	ORIF of Fracture - K Wire - Including Cost of Implant	₹ 53,395	₹ 66,744	₹ 74,160	₹ 88,992	₹ 96,408	To add cost of special consummables, special equipments, senior/experienced/super specialist fees)

3	ORIF of Fracture - Plating - Excluding Cost of Implant	₹ 80,093	₹ 1,00,116	₹ 1,11,240	₹ 1,33,488	₹ 1,44,612	To add cost of special consummables, special equipments, senior/ experienced/super specialist fees)
4	Periarticular / Intraarticular Fracture Fixation - Excluding Cost of Implant	₹ 1,06,790	₹ 1,33,488	₹ 1,48,320	₹ 1,77,984	₹ 1,92,816	To add cost of special consummables, special equipments, senior/ experienced/super specialist fees)
5	Fracture of Pelvis Acetabulum - Excluding Cost of Implant	₹ 1,33,488	₹ 1,66,860	₹ 1,85,400	₹ 2,22,480	₹ 2,41,020	To add cost of special consummables, special equipments, senior/ experienced/super specialist fees)
3	ORIF - Ankle/ Talus/ Calcaneum - Excluding cost of Implant	₹ 80,093	₹ 1,00,116	₹ 1,11,240	₹ 1,33,488	₹ 1,44,612	To add cost of special consummables, special equipments, senior/ experienced/super specialist fees)
3	IM Nailing - Interlocking - Excluding Cost of Implant	₹ 80,093	₹ 1,00,116	₹ 1,11,240	₹ 1,33,488	₹ 1,44,612	To add cost of special consummables, special equipments, senior/ experienced/super specialist fees)

4	IM Nailing Femur - Interlocking - Excluding Cost of Implant	₹ 1,06,790	₹ 1,33,488	₹ 1,48,320	₹ 1,77,984	₹ 1,92,816	To add cost of special consummables, special equipments, senior/experienced/super specialist fees)
5	Fracture Neck of Femur (NOF) - Excluding Cost of Implant	₹ 1,33,488	₹ 1,66,860	₹ 1,85,400	₹ 2,22,480	₹ 2,41,020	To add cost of special consummables, special equipments, senior/experienced/super specialist fees)
3	Laminectomy / Discectomy	₹ 80,093	₹ 1,00,116	₹ 1,11,240	₹ 1,33,488	₹ 1,44,612	To add cost of special consummables, special equipments, senior/experienced/super specialist fees)
2	Microdiscectomy	₹ 53,395	₹ 66,744	₹ 74,160	₹ 88,992	₹ 96,408	To add cost of special consummables, special equipments, senior/experienced/super specialist fees)
4	Spinal Fusion (Cervical / Lumbar / Thoracic) - Where Implant is not going to be used - Including Navigation	₹ 1,06,790	₹ 1,33,488	₹ 1,48,320	₹ 1,77,984	₹ 1,92,816	To add cost of special consummables, special equipments, senior/experienced/super specialist fees)

4	Spinal Fusion (Cervical / Lumbar / Thoracic) - Where Implant is going to be used - Including Navigation - Cost of Implant extra	₹ 1,06,790	₹ 1,33,488	₹ 1,48,320	₹ 1,77,984	₹ 1,92,816	To add cost of special consummables, special equipments, senior/experienced/super specialist fees)
2	Closed Reduction of Major Joints Under GA / SA	₹ 53,395	₹ 66,744	₹ 74,160	₹ 88,992	₹ 96,408	To add cost of special consummables, special equipments, senior/experienced/super specialist fees)
4	Bipolar Hemiarthroplasty / Dynamic hip screw (DHS) - Excluding Cost of Implant	₹ 1,06,790	₹ 1,33,488	₹ 1,48,320	₹ 1,77,984	₹ 1,92,816	To add cost of special consummables, special equipments, senior/experienced/super specialist fees)
5	Total Knee Replacement - Unilateral - Excluding Cost of Implant	₹ 1,33,488	₹ 1,66,860	₹ 1,85,400	₹ 2,22,480	₹ 2,41,020	To add cost of special consummables, special equipments, senior/experienced/super specialist fees)
7	Total Knee Replacement - Bilateral - Excluding Cost of Implant	₹ 1,86,883	₹ 2,33,604	₹ 2,59,560	₹ 3,11,472	₹ 3,37,428	To add cost of special consummables, special equipments, senior/experienced/super specialist fees)

5	Total Hip Replacement - Unilateral - Excluding Cost of Implant	₹ 1,33,488	₹ 1,66,860	₹ 1,85,400	₹ 2,22,480	₹ 2,41,020	To add cost of special consummables, special equipments, senior/experienced/super specialist fees)
7	Total Hip Replacement - Bilateral - Excluding Cost of Implant	₹ 1,86,883	₹ 2,33,604	₹ 2,59,560	₹ 3,11,472	₹ 3,37,428	To add cost of special consummables, special equipments, senior/experienced/super specialist fees)
1	A V Fistula For Dialysis (Day Care)	₹ 26,698	₹ 33,372	₹ 37,080	₹ 44,496	₹ 48,204	To add cost of special consummables, special equipments, senior/experienced/super specialist fees)
3	TURP	₹ 80,093	₹ 1,00,116	₹ 1,11,240	₹ 1,33,488	₹ 1,44,612	To add cost of special consummables, special equipments, senior/experienced/super specialist fees)
4	HoLEP - Including cost of Laser	₹ 1,06,790	₹ 1,33,488	₹ 1,48,320	₹ 1,77,984	₹ 1,92,816	To add cost of special consummables, special equipments, senior/experienced/super specialist fees)

1	Hydrocelectomy Unilateral	₹ 26,698	₹ 33,372	₹ 37,080	₹ 44,496	₹ 48,204	To add cost of special consummables, special equipments, senior/experienced/super specialist fees)
1	Hydrocelectomy Bilateral	₹ 26,698	₹ 33,372	₹ 37,080	₹ 44,496	₹ 48,204	To add cost of special consummables, special equipments, senior/experienced/super specialist fees)
1	Varicocele ctomy	₹ 26,698	₹ 33,372	₹ 37,080	₹ 44,496	₹ 48,204	To add cost of special consummables, special equipments, senior/experienced/super specialist fees)
1	Varicocele ctomy Bil	₹ 26,698	₹ 33,372	₹ 37,080	₹ 44,496	₹ 48,204	To add cost of special consummables, special equipments, senior/experienced/super specialist fees)
3	Simple PCNL + Stenting	₹ 80,093	₹ 1,00,116	₹ 1,11,240	₹ 1,33,488	₹ 1,44,612	To add cost of special consummables, special equipments, senior/experienced/super specialist fees)

4	Simple BIL PCNL + Stenting	₹ 1,06,790	₹ 1,33,488	₹ 1,48,320	₹ 1,77,984	₹ 1,92,816	To add cost of special consumm ables,spe cial equipmen ts,senior/ experien ced/super specialist fees)
4	StagHorn PCNL + Stenting	₹ 1,06,790	₹ 1,33,488	₹ 1,48,320	₹ 1,77,984	₹ 1,92,816	To add cost of special consumm ables,spe cial equipmen ts,senior/ experien ced/super specialist fees)
4	StagHorn Bil PCNL + Stenting	₹ 1,06,790	₹ 1,33,488	₹ 1,48,320	₹ 1,77,984	₹ 1,92,816	To add cost of special consumm ables,spe cial equipmen ts,senior/ experien ced/super specialist fees)
2	Mini - Perc + Stenting	₹ 69,404	₹ 84,754	₹ 94,172	₹ 1,13,006	₹ 1,22,423	To add cost of special consumm ables,spe cial equipmen ts,senior/ experien ced/super specialist fees)
2	RIRS Uni	₹ 69,404	₹ 84,754	₹ 94,172	₹ 1,13,006	₹ 1,22,423	To add cost of special consumm ables,spe cial equipmen ts,senior/ experien ced/super specialist fees)

2	RIRS Bil	₹ 53,395	₹ 66,744	₹ 74,160	₹ 88,992	₹ 96,408	To add cost of special consummables, special equipments, senior/experienced/super specialist fees)
2	URS Lithotripsy - Including Cost of DJ Stenting	₹ 53,395	₹ 66,744	₹ 74,160	₹ 88,992	₹ 96,408	To add cost of special consummables, special equipments, senior/experienced/super specialist fees)
2	URS Lithotripsy Bil - Including Cost of DJ Stenting	₹ 53,395	₹ 66,744	₹ 74,160	₹ 88,992	₹ 96,408	To add cost of special consummables, special equipments, senior/experienced/super specialist fees)
2	URS Lithotripsy - Including Cost of DJ Stenting and LASER	₹ 53,395	₹ 66,744	₹ 74,160	₹ 88,992	₹ 96,408	To add cost of special consummables, special equipments, senior/experienced/super specialist fees)
2	URS Lithotripsy Bil - Including Cost of DJ Stenting and LASER	₹ 53,395	₹ 66,744	₹ 74,160	₹ 88,992	₹ 96,408	To add cost of special consummables, special equipments, senior/experienced/super specialist fees)

1	Lithotripsy - ESWL + Stenting	₹ 26,698	₹ 33,372	₹ 37,080	₹ 44,496	₹ 48,204	To add cost of special consumm ables,spe cial equipmen ts,senior/ experien ced/super specialist fees)
1	Lithotripsy - ESWL	₹ 26,698	₹ 33,372	₹ 37,080	₹ 44,496	₹ 48,204	To add cost of special consumm ables,spe cial equipmen ts,senior/ experien ced/super specialist fees)
1	Cystoscop y & DJ Stent Insertion (Day care)	₹ 26,698	₹ 33,372	₹ 37,080	₹ 44,496	₹ 48,204	To add cost of special consumm ables,spe cial equipmen ts,senior/ experien ced/super specialist fees)
1	Cystoscop y & DJ Stent Removal (Day care)	₹ 26,698	₹ 33,372	₹ 37,080	₹ 44,496	₹ 48,204	To add cost of special consumm ables,spe cial equipmen ts,senior/ experien ced/super specialist fees)
2	Cystoscop y URS & DJ stenting - Including cost of stent	₹ 53,395	₹ 66,744	₹ 74,160	₹ 88,992	₹ 96,408	To add cost of special consumm ables,spe cial equipmen ts,senior/ experien ced/super specialist fees)

2	Cystoscopy URS & DJ stenting Bil - Including cost of stent	₹ 53,395	₹ 66,744	₹ 74,160	₹ 88,992	₹ 96,408	To add cost of special consummables, special equipments, senior/experienced/super specialist fees)
4	TURBT	₹ 1,06,790	₹ 1,33,488	₹ 1,48,320	₹ 1,77,984	₹ 1,92,816	To add cost of special consummables, special equipments, senior/experienced/super specialist fees)
2	Orchidectomy - Unilateral	₹ 53,395	₹ 66,744	₹ 74,160	₹ 88,992	₹ 96,408	To add cost of special consummables, special equipments, senior/experienced/super specialist fees)
2	Orchidectomy High Uro Onco - Unilateral	₹ 53,395	₹ 66,744	₹ 74,160	₹ 88,992	₹ 96,408	To add cost of special consummables, special equipments, senior/experienced/super specialist fees)
2	Orchidectomy - Bilateral	₹ 53,395	₹ 66,744	₹ 74,160	₹ 88,992	₹ 96,408	To add cost of special consummables, special equipments, senior/experienced/super specialist fees)

2	Orchidectomy - Bilateral	₹ 53,395	₹ 66,744	₹ 74,160	₹ 88,992	₹ 96,408	To add cost of special consummables, special equipments, senior/experienced/super specialist fees)
2	VIU	₹ 53,395	₹ 66,744	₹ 74,160	₹ 88,992	₹ 96,408	To add cost of special consummables, special equipments, senior/experienced/super specialist fees)
3	Urethroplasty (Buccal Graft)	₹ 80,093	₹ 1,00,116	₹ 1,11,240	₹ 1,33,488	₹ 1,44,612	To add cost of special consummables, special equipments, senior/experienced/super specialist fees)
4	Pan Urethroplasty (Buccal Graft)	₹ 1,06,790	₹ 1,33,488	₹ 1,48,320	₹ 1,77,984	₹ 1,92,816	To add cost of special consummables, special equipments, senior/experienced/super specialist fees)
4	End to End Urethroplasty (Buccal Graft)	₹ 1,06,790	₹ 1,33,488	₹ 1,48,320	₹ 1,77,984	₹ 1,92,816	To add cost of special consummables, special equipments, senior/experienced/super specialist fees)